

Product catalog

Dental implants and accessories manufacturing



INTRODUCTION:

SMART Dental Ltd, established in Israel in 2016, is a manufacturer of dental implants and accessories.

SMART Digital's eco system includes multi-units, Ti- bases, scan abutments, digital analogs, libraries for ExoCad and 3Shape, Dental wings, and more products to help you do your best work for your patient.

QUALITY:

SMART Dental has established, implemented, and communicated throughout the organization a Medical Devices Quality Management System that meets customer requirements, Regulatory & International Standards Requirements - ISO 13485:2016, EU MDR 2017/745, USA QSR 21 CFR 820. Since its establishment, SMART Dental's philosophy has been impeccable quality, which speaks for itself. The emphasis is on quality. We focus on equipment precision and the quality of materials from which dental implants and other dental restoration elements are made.

This has enabled SMART Dental to achieve great results in the manufacture of dental implants, multi-units, abutments, and other prosthetic parts with minimum tolerances (deviation of the actual size). This is a key quality criterion. The accuracy of fit and gap-free fit, especially at the implant/abutment line, is important.

SMART has established, implemented, and communicated throughout the organization a Medical

REGULATION:

UNIQA Dental's quality management system meets customer requirements as well as regulatory & international standards.

Requirements: - ISO 13485:2016, EU MDR 2017/745, USA QSR 21 CFR 820.

Our dental Implant system has been cleared for marketing in the USA under 510k K180598.

UNIQA Dental LTD's medical devices that are sold in the EU bear the CE Mark.

Some products may not be regulatory cleared for sale in your market.

Please contact your local sales representative.



SMART DENTAL PRODUCTS:

Utilizing the latest technologies and methods, such as the "SMART Surface" method, we provide dental implants with the most advanced surfaces.

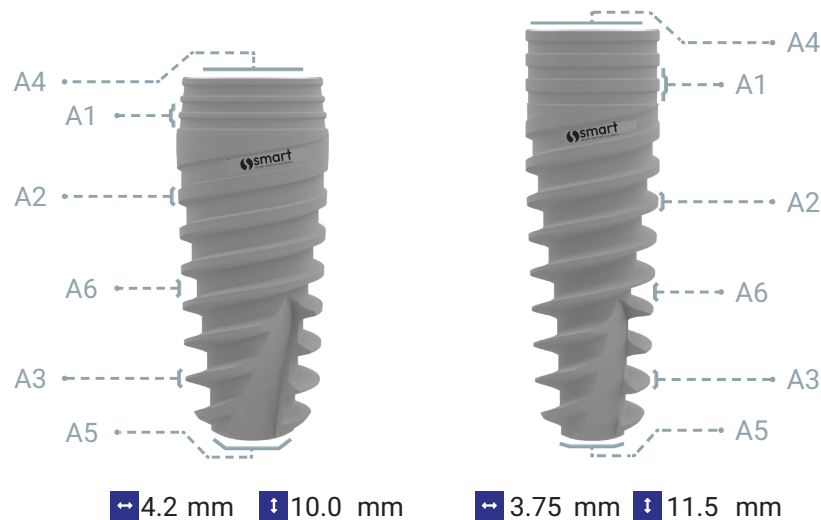
We also supply:

- Multi-units
- CAD/CAM solutions
- Ti-base units
- Dental abutments
- Healing caps
- Overdentures
- Implant analogs
- Products for dental laboratories and many more.

We offer prosthetic products that are compatible with more than 35 platforms, including: Zimmer, MIS, Nobel, Megagen, Straumann, Hiossen, NeoDent Grand Mors, Dentium, Alpha Bio, and many others. Maximum precision, premium materials and highly qualified professionals make it possible for us to create the finest dental products that provide dentists with absolute confidence.

*The "SMART Surface" method, which provides the most advanced dental implant surfaces, was developed by a Doctor of Chemistry with extensive experience in metal surface treatment.

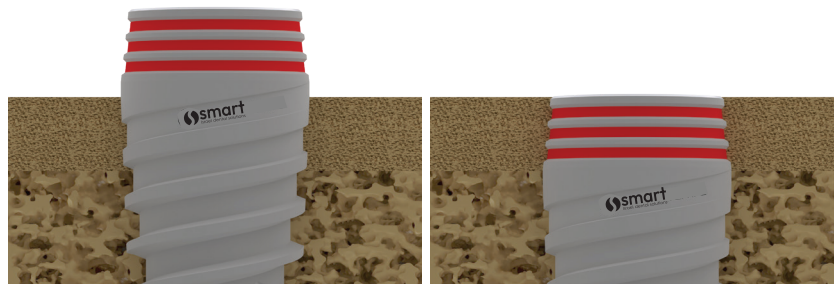
A0. Table of Contents



A1. Back-tapered coronal design

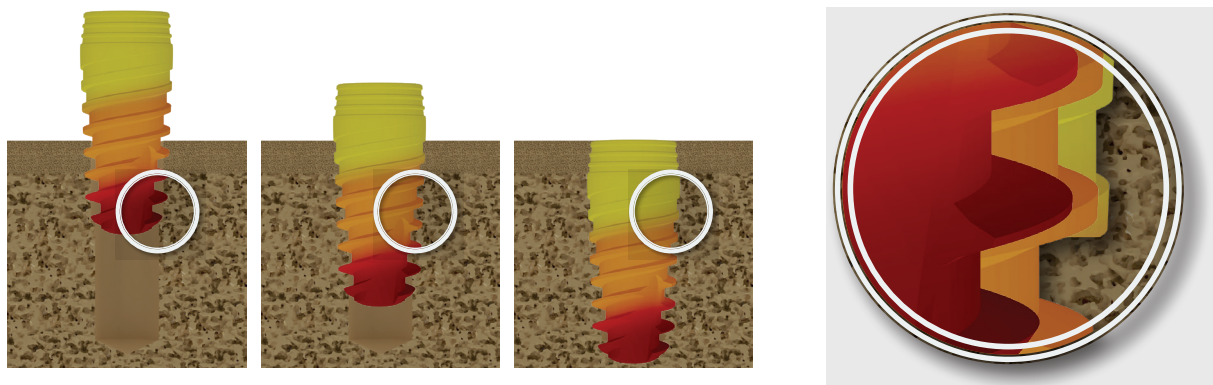
In the end, it's all about the final result.

SMART Dental's back-tapered coronal design and built-in platform switching are designed to optimize bone and soft tissue volume for natural-looking esthetics.



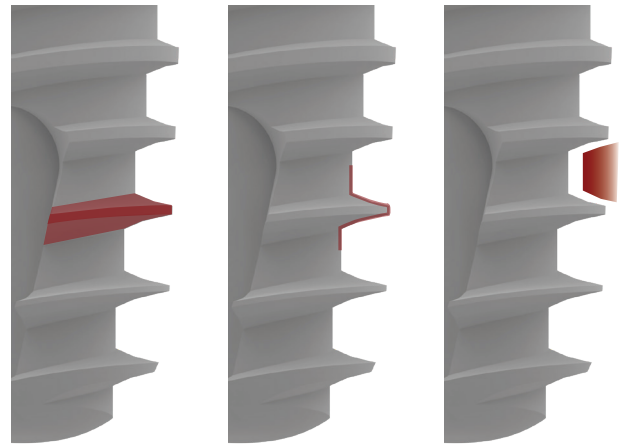
A2. Expanding tapered implant body

SMART Dental's expanding tapered implant body condenses bone gradually while the apex with cutting blades enables a smaller osteotomy. These features help to achieve high primary stability in demanding situations, such as soft bone or extraction sockets. SMART Dental enables immediate implant placement and Immediate loading where it might otherwise be challenging



A3. Knife Thread

- Guarantees sustained implant stability
1. Easier insertion due to sharp thread shape
 2. Increased surface area due to round-faced design
- Excellent initial stability
 - Extraordinary BIC
 - Optimal cutting efficiency during insertion
 - High resistance to compressive force
 - Minimized shear force during implantation
 - Maximized surface area
 - Large inter-thread area supports angiogenesis & Sustains blood supply



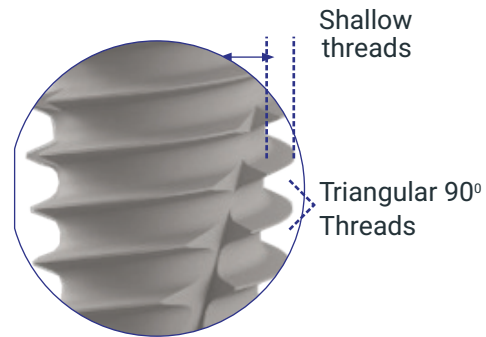
A3. Opposite of knife thread



SMART Dental Implant



Other Company Implant



Compressing bone = Bone heating

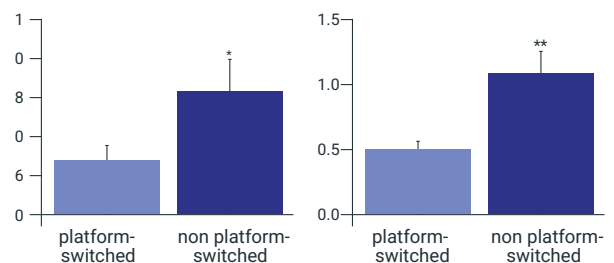
A4. Platform switching

The SMART Dental's implant platform switching system keeps the implantabutment connection away from the bone; minimizing bone resorption. Platform switching additionally allows more vital growth of the soft tissue



Platform Switching.

The present study confirms that the platform-switching concept can minimize marginal bone loss over a 1- year period, in agreement with a previous trial and recent meta-analysis. Specifically, average marginal bone loss around non-platformswitched implants (0.78 mm mesially and 0.90 mm distally) was more than twice the average marginal bone loss around platform-switched implants (0.30 mm mesially and 0.38 mm distally)



Significantly less bone loss was seen around platform-switched implants (left) at the time of insertion of the definitive prosthesis and (right) after 1 year of function. Data is presented as means ± standard errors of the mean; statistical analyses were performed using two-tailed t tests for unpaired comparisons. *P < .05, **P < .01.

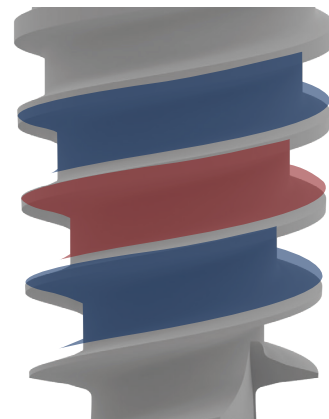
A5. Two spiral channels and domed apex



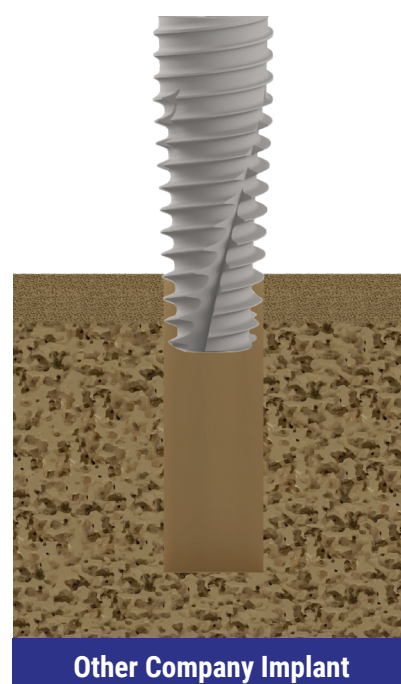
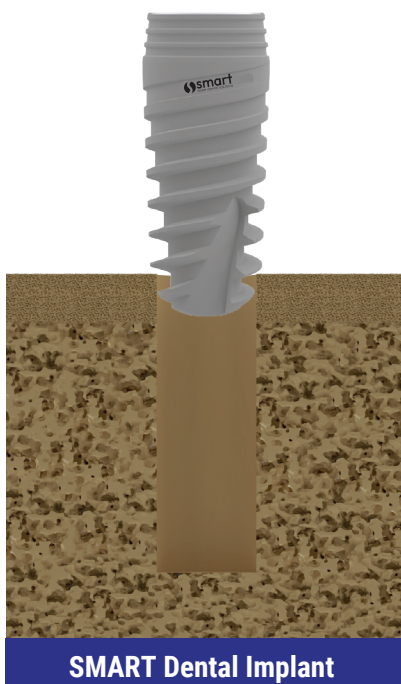
The SMART Dental's implant features a domed apex, providing a high tolerance and safe procedure during insertion. Two cutting blades at the implant apex establish the self-tapping properties that support a simpler, safer and faster procedure

A6. Dual thread

The SMART Dental's implant dual thread design doubles the implant insertion rate (2.0 mm), facilitating a simpler and faster implant placement. The self-tapping design and mild bone compression properties enhance primary stability.

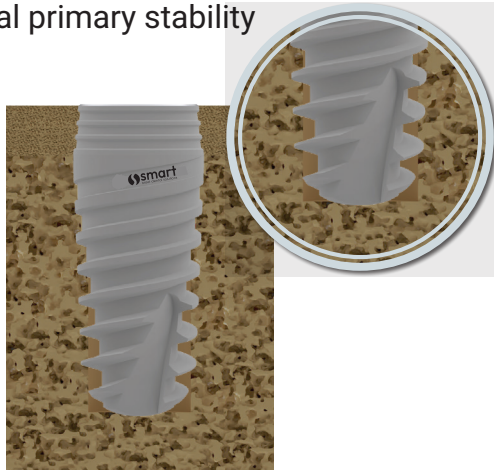


A7. Maximal Implant bone contact



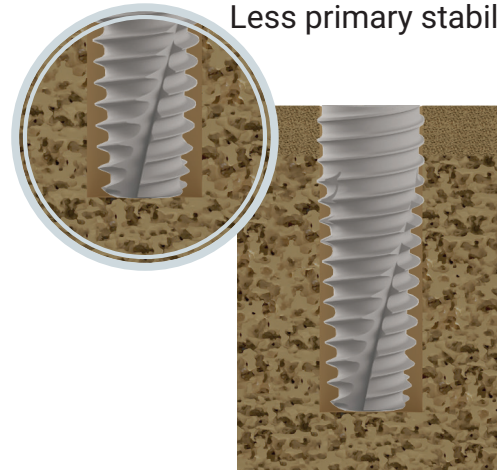
A7. Maximal Implant bone contact

Maximal Implant bone contact
= Maximal primary stability



SMART Dental Implant

Space between implant and bone
= Less primary stability

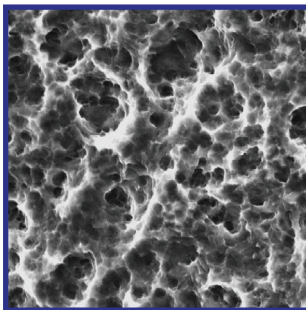


Other Company Implant

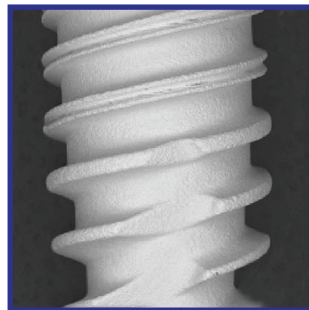
A8. SMART Surface

“SMART Surface” surface is well structured as SLA and clean as RBM

“SMART Surface” of dental implant’s surface unites the well-known advantages of SLA* and RBM** types of the surface (highly developed porosity for SLA and high surface cleanness for RBM), and is free from their drawbacks (occasional remains of blasting particles for SLA, and is not well structured surface topography for RBM).



Porosity



Cleanness

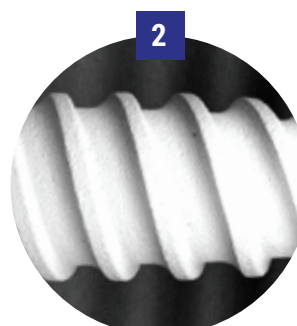
*SLA is Alumina (or Sand) Blasted, Large-grit, Acid-etched surface of dental implants, pioneered by Strauman.

** RBM is a dental implants surface treated by Resorbable Blasted Media (Hydroxyapatite and other Calcium Phosphates) following by light acid washing, pioneered by Lifecore.

SEM microphotographs in Back Scattering mode (BC) allow black highlighting of any non-metallic surface inclusions: more black points more contaminated surface. SEM BC microphotographs at magnification 50 shown here present implants of (1) CMAPT Dental “SMART Surface”, (2) MIS a (3) a manufacturer existing at the market. Cleanness of the items (1) and (2) vs impurity of the item (3) is visually obvious.



1



2



3

Manufacturer	Content of components, atomic %, by XPS		Source of information
	Ti	Contaminates	
MIS	20.3	0.0	POSEIDO.2014;2(1):37-55.
SMART Dental	18.2	0.0	Lot C10018 Nov 2017 University Test
SMART Dental	18.4	0.0	Lot D08051 June 2018 University Test
Paltop	15.9	0.0	The Company's own publication
InKone	20.9	1.1	POSEIDO.2014;2(1):37-55.
Blue Sky Bio	16.3	2.1	POSEIDO.2014;2(1):37-55.
Alpha-Bio	8.2	3.1	POSEIDO.2014;2(1):37-55.
Osstem	19.8	3.4	The Company's own publication
Magitech	8.4	7.1	POSEIDO.2014;2(1):37-55.

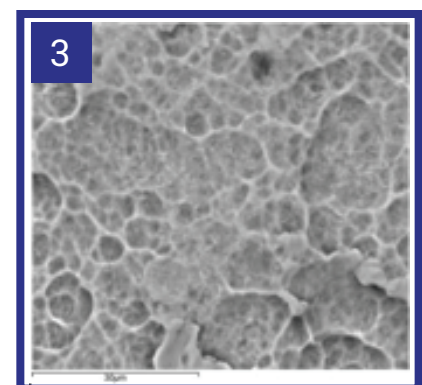
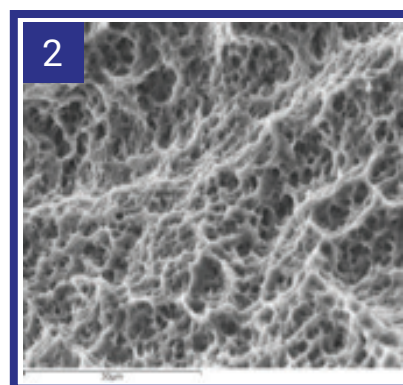
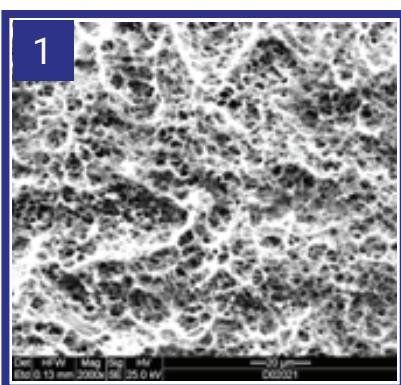
Conclusions:

The surface of SMART Dental "SMART Surface" implant sample is completely free from contaminants, similar to the best world manufacturers;

Titanium content on the SMART Dental "SMART Surface" surface is on the level of the best world manufacturers.

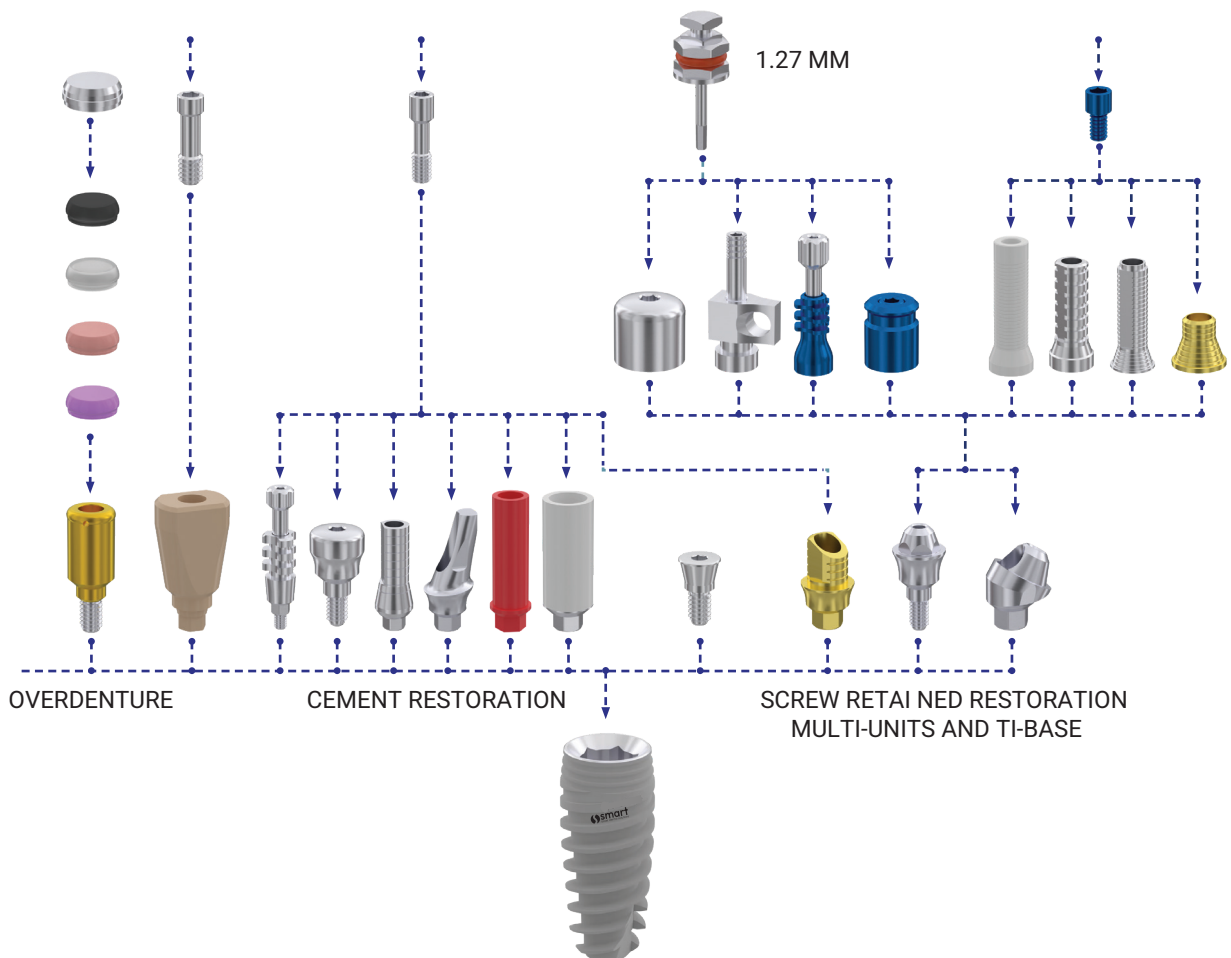
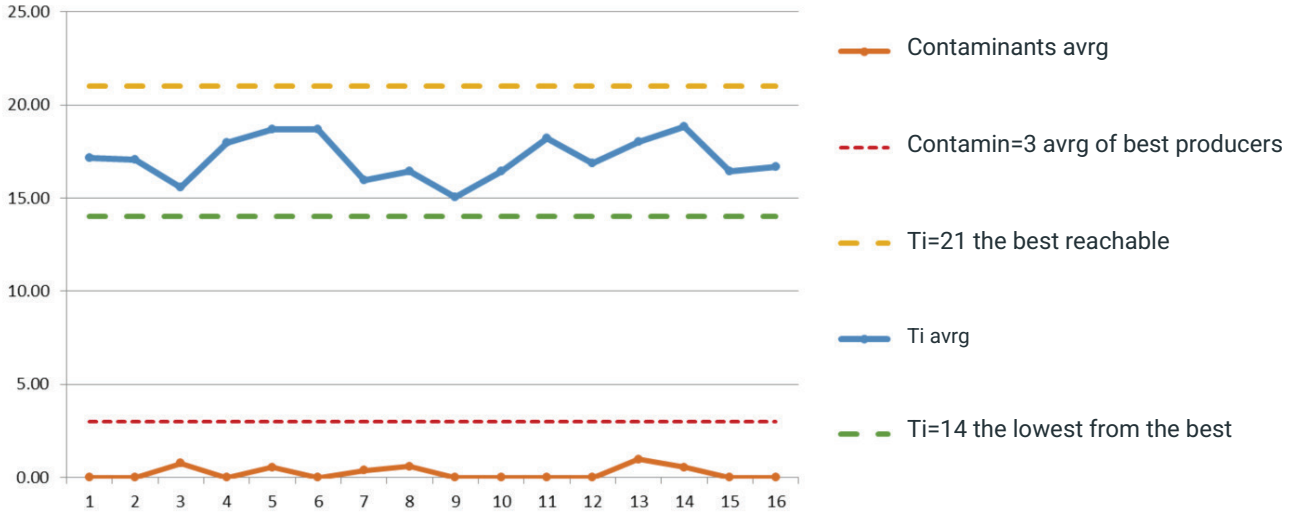
SEM microphotographs in Secondary Electrons mode (SE) illustrate volume image of the surface. This method is a good instrument for visual evaluation of surface microstructure.

SEM SE microphotographs at Magnification 2000 shown here present dental implants of (1) SMART Dental "SMART Surface" (Lot D02021, April 2018)), (2) MIS and (3) a manufacturer existing at the market. Items (1), (2) demonstrate high-porous micro-surface topography, highly appreciated in today dental implants' practice, while item (3) has much more smoothed surface.

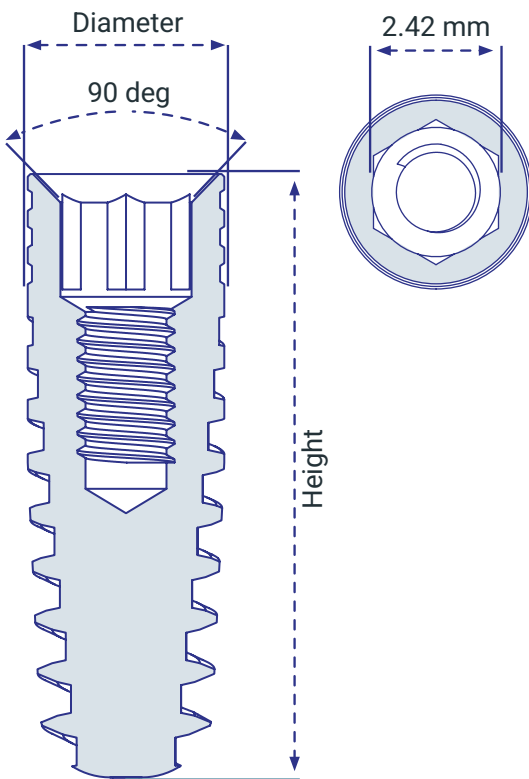


A9. SMART Dental results Ti % and Contamination%

Year after year SMART Dental shows high results in the % of titanium and a very low % of residue. Both of these indicators are a significant factor that impact on surface quality. Stability and consistency in the results gives a high level of confidence in the work processes and technology of SMART DENTAL to its customers.



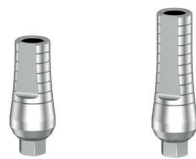
INTERNAL HEX PLATFORM



HEIGHT	DIAMETER			
	3.3 mm	3.75 mm	4.2 mm	5.0 mm
8 mm	USI-3308	USI-3708	USI-4208	USI-5008
10 mm	USI-3310	USI-3710	USI-4210	USI-5010
11.5 mm	USI-3311	USI-3711	USI-4211	USI-5011
13 mm	USI-3313	USI-3713	USI-4213	USI-5013
16 mm	USI-3316	USI-3716	USI-4216	USI-5016

Straight abutment

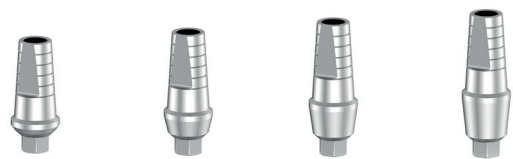
- TORQUE 30 Ncm
- + SUPPLIED WITH USWR-3783



ITEM	GH 9 mm	GH 11 mm
REF	USBR-4609	USBR-4611

Straight abutment with shoulder

- TORQUE 30 Ncm
- + SUPPLIED WITH USWR-3783



ITEM	GH 1 mm	GH 2 mm	GH 3 mm	GH 4 mm
REF	USSR-4601	USSR-4602	USSR-4603	USSR-4604

Straight anatomic abutment

- TORQUE 30 Ncm
- + SUPPLIED WITH USWR-3783



ITEM	GH 1 mm	GH 2 mm	GH 3 mm	GH 4 mm
REF	USAR-5001	USAR-5002	USAR-5003	USAR-5004

Straight abutment wide

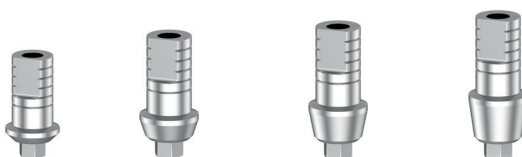
- TORQUE 30 Ncm
- + SUPPLIED WITH USWR-3783



ITEM	GH 9 mm
REF	USBW-5509

Straight abutment with shoulder wide Ø5.5

- TORQUE 30 Ncm
- + SUPPLIED WITH USWR-3783



ITEM	GH 1 mm	GH 2 mm	GH 3 mm	GH 4 mm
REF	USSW-5501	USSW-5502	USSW-5503	USSW-5504

15° abutment

- TORQUE 30 Ncm
- + SUPPLIED WITH USWR-3783



ITEM	GH 9 mm	GH 12 mm
REF	UABR-1509	UABR-1512

15° abutment with shoulder

- TORQUE 30 Ncm
- SUPPLIED WITH USWR-3783



ITEM	GH 1 mm	GH 2 mm	GH 3 mm	GH 4 mm
REF	UAAR-1501	UAAR-1502	UAAR-1503	UAAR-1504

25° abutment

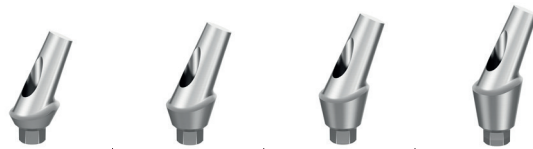
- TORQUE 30 Ncm
- SUPPLIED WITH USWR-3783



ITEM	GH 9 mm	GH 12 mm
REF	UABR-2509	UABR-2512

25° abutment with shoulder

- TORQUE 30 Ncm
- SUPPLIED WITH USWR-3783



ITEM	GH 1 mm	GH 2 mm	GH 3 mm	GH 4 mm
REF	UAAR-2501	UAAR-2502	UAAR-2503	UAAR-2504

Screw for abutment

- TORQUE 30 Ncm
- SCREW DRIVER TYPE Hex, 1.27 mm



REF	USWR-3783
-----	-----------

Healing cap Ø4.5

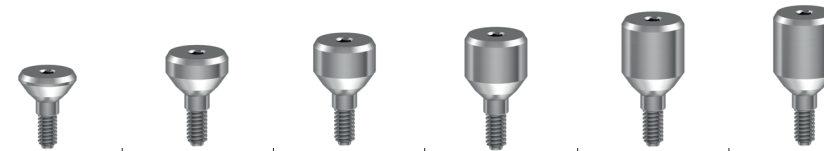
- TORQUE 15 Ncm
- TORQUE 15 Ncm



ITEM	H 2 mm	H 3 mm	H 4 mm	H 5 mm	H 6 mm	H 7 mm
REF	UHCR-4602	UHCR-4603	UHCR-4604	UHCR-4605	UHCR-4606	UHCR-4607

Healing cap Ø5.5

- TORQUE 15 Ncm
- TORQUE 15 Ncm



ITEM	H 2 mm	H 3 mm	H 4 mm	H 5 mm	H 6 mm	H 7 mm
REF	UHCR-5502	UHCR-5503	UHCR-5504	UHCR-5505	UHCR-5506	UHCR-5507

Ball attachment abutment

- SCREW DRIVER TYPE Hex, 1.27 mm



ITEM	GH 0.5 mm	GH 1 mm	GH 2 mm	GH 3 mm	GH 4 mm	GH 5 mm	GH 6 mm	GH 7 mm
REF	UBAR-0050	UBAR-0001	UBAR-0002	UBAR-0003	UBAR-0004	UBAR-0005	UBAR-0006	UBAR-0007

15° Ball attachment abutment

- TORQUE 30 Ncm
- SUPPLIED WITH USWR-3783



ITEM	GH 1 mm	GH 2 mm	GH 3 mm
REF	BAR-IHR1501U	BAR-IHR1502U	BAR-IHR1503U

30° Ball attachment abutment

- TORQUE 30 Ncm
- SUPPLIED WITH USWR-3783







ITEM	GH 1 mm	GH 2 mm	GH 3 mm
REF	BAR-IHR3001U	BAR-IHR3002U	BAR-IHR3003U

Housing cap for ball attachment  REF UBMR-0001	Silicone cap for ball attachment standard  REF UBSR-0001	Silicone cap for ball attachment extrasoft  REF UBSR-0002	Silicone cap for ball attachment lab  REF UBSR-0003
--	--	--	---

DLOC attachment abutment

SCREW DRIVER TYPE
Hex, 1.27 mm

					
ITEM	GH 1 mm	GH 2 mm	GH 3 mm	GH 4 mm	GH 5 mm
REF	ULAR-0001	ULAR-0002	ULAR-0003	ULAR-0004	ULAR-0005

15° DLOC attachment abutment

TORQUE
30 Ncm

 SUPPLIED WITH
USWR-3783

			
ITEM	GH 1 mm	GH 2 mm	GH 3 mm
REF	LAR-IHR1501U	LAR-IHR1502U	LAR-IHR1503U

30° DLOC attachment abutment

TORQUE
30 Ncm

 SUPPLIED WITH
USWR-3783





			
ITEM	GH 1 mm	GH 2 mm	GH 3 mm
REF	LAR-IHR3001U	LAR-IHR3002U	LAR-IHR3003U

Housing cap for DLOC  REF ULMR-0001	Silicone cap for DLOC lab  REF ULCR-0004	Silicone cap for DLOC standard  REF ULCR-0002	Silicone cap for DLOC soft  REF ULCR-0001	Silicone cap for DLOC strong  REF ULCR-0003
---	--	---	--	---

Castable anatomic abutment

TORQUE
15 Ncm

 SUPPLIED WITH
USWR-3783

				
ITEM	GH 1 mm	GH 2 mm	GH 3 mm	GH 4 mm
REF	UCAR-3701	UCAR-3702	UCAR-3703	UCAR-3704

UCLA Titanium base

TORQUE
15 Ncm





 SUPPLIED WITH
USWR-3783

	
REF	UCLR-4610

15° castable anatomic abutment

TORQUE
15 Ncm



 SUPPLIED WITH
USWR-3783

				
ITEM	GH 1 mm	GH 2 mm	GH 3 mm	GH 4 mm
REF	UCAR-1501	UCAR-1502	UCAR-1503	UCAR-1504

Castable abutment

TORQUE
15 Ncm

 SUPPLIED WITH
USWR-3783

		
ITEM	Hex	Round
REF	UCBR-0011	UCBR-1011

Implant analog



REF | UIAR-0001

Snap on transfer

- TORQUE 30 Ncm
- SUPPLIED WITH USWR-3783 + UTSC-4510



ITEM	GH 1 mm	GH 2 mm	GH 3 mm	GH 4 mm
REF	UTSR-4501	UTSR-4502	UTSR-4503	UTSR-4504

Cap for Snap on transfer



REF | UTSC-4510

Implant analog wide



REF | UIAW-5501

Transfer open tray

- SUPPLIED WITH UTSR-0017



ITEM	Narrow body	Regular	Wide
REF	UTON-4011	UTOR-4512	UTOW-5501

Transfer closed tray

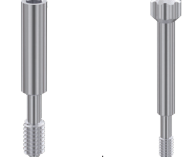
- SUPPLIED WITH UTSR-0010



REF | UTCR-4509

Screw for transfer

- TORQUE 30 Ncm



ITEM	closed tray	open tray
REF	UTSR-0010	UTSR-0017

Ti-Base UNO hex - H4 mm

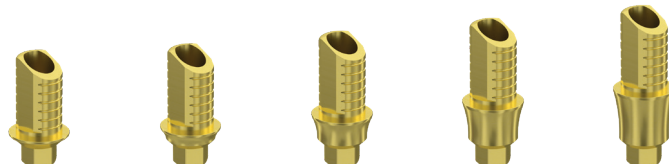
- TORQUE 30 Ncm
- SUPPLIED WITH USWR-3783



ITEM	GH 0 mm	GH 1 mm	GH 2 mm	GH 3 mm	GH 4 mm
REF	TBU-IHR0400U	TBU-IHR0401U	TBU-IHR0402U	TBU-IHR0403U	TBU-IHR0404U

Ti-Base UNO hex - H6 mm

- TORQUE 30 Ncm
- SUPPLIED WITH USWR-3783



ITEM	GH 0 mm	GH 1 mm	GH 2 mm	GH 3 mm	GH 4 mm
REF	TBU-IHR0600U	TBU-IHR0601U	TBU-IHR0602U	TBU-IHR0603U	TBU-IHR0604U

Ti-Base UNO round - H4 mm

- TORQUE 30 Ncm
- SUPPLIED WITH USWR-3783



ITEM	GH 0 mm	GH 1 mm	GH 2 mm	GH 3 mm	GH 4 mm
REF	TBU-IHR1400U	TBU-IHR1401U	TBU-IHR1402U	TBU-IHR1403U	TBU-IHR1404U

Ti-Base UNO round - H6 mm

- TORQUE 30 Ncm
- SUPPLIED WITH USWR-3783



ITEM	GH 0 mm	GH 1 mm	GH 2 mm	GH 3 mm	GH 4 mm
REF	TBU-IHR1600U	TBU-IHR1601U	TBU-IHR1602U	TBU-IHR1603U	TBU-IHR1604U

Digital implant analog

+ SUPPLIED WITH UIAR-S001



REF | UIAR-D001

Scan body implant level H9

+ TORQUE 15 Ncm



REF | USBI-0009

Screw for angled MUA D-type

+ TORQUE 30 Ncm

+ SCREW DRIVER TYPE Hex, 1.27 mm



REF | UMSD-0007

Straight multi unit abutment D-type

+ TORQUE 30 Ncm

+ SCREW DRIVER TYPE Hex, 6.35 mm



ITEM	GH 1 mm	GH 2 mm	GH 3 mm	GH 4 mm
REF	USMD-3701	USMD-3702	USMD-3703	USMD-3704

17° multi unit abutment D-type

+ TORQUE 30 Ncm

+ SCREW DRIVER TYPE Hex, 1.27 mm

+ SUPPLIED WITH UMSD-0007



ITEM	GH 1 mm	GH 2 mm	GH 3 mm	GH 4 mm
REF	UAMD-1701	UAMD-1702	UAMD-1703	UAMD-1704

30° multi unit abutment D-type

+ TORQUE 30 Ncm

+ SCREW DRIVER TYPE Hex, 1.27 mm

+ SUPPLIED WITH UMSD-0007



ITEM	GH 1 mm	GH 2 mm	GH 3 mm	GH 4 mm
REF	UAMD-3001	UAMD-3002	UAMD-3003	UAMD-3004

45° multi unit abutment D-type

+ TORQUE 30 Ncm

+ SCREW DRIVER TYPE Hex, 1.27 mm

+ SUPPLIED WITH UMSD-0007



ITEM	GH 1 mm	GH 2.5 mm
REF	UAMD-4501	UAMD-4525

Temporary sleeve for MUA D-type

+ TORQUE 15 Ncm

+ SUPPLIED WITH UMSD-0002U



REF | USTD-000

Castable sleeve for MUA D-type

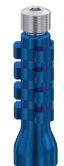
+ SUPPLIED WITH UMSD-0002U



REF | USCD-0001

Transfer for MUA D-type H15

+ SUPPLIED WITH UMSD-0017



REF | UMTD-0002U

Transfer for MUA D-type H12

+ SUPPLIED WITH UMSD-0017



REF | UMTD-0001U

Transfer for MUA D-type

+ SUPPLIED WITH UMSD-2012



REF | UMTD-0002

Screw for MUA transfer D-type

REF | UMSD-0017



Screw TITLE

TORQUE
30 Ncm



REF | UMSD-2012

Analog MUA D-type



REF | UMAD-0001U

Healing cap for MUA D-type

TORQUE
15 Ncm



REF | UMHD-0004

Screw for MUA sleeve D-type U

TORQUE
30 Ncm
 SCREW DRIVER TYPE
Hex, 1.27 mm



REF | UMSD-0002U

Screw for MUA sleeve D-type Torx6

TORQUE
30 Ncm
 SCREW DRIVER TYPE
Hex, 1.27 mm



REF | UMSD-T603U

Digital analog MUA D-type

SUPPLIED WITH
UIAR-S001



REF | UMAD-D001U

Scan body MUA level D-type

TORQUE
15 Ncm
 SUPPLIED WITH
USBD-S001



REF | USBD-0001

Scan body MUA level D-type H12

TORQUE
15 Ncm
 SUPPLIED WITH
USBD-S012



REF | USBD-0012

Sleeve for MUA D-type H4 C

TORQUE
30 Ncm
 SUPPLIED WITH
UMSD-0002U



REF | USTD-0003C

Ratchet key for straight MUA D-type

TORQUE
30 Ncm



ITEM	H 6.3 mm
REF	UMDR-2716

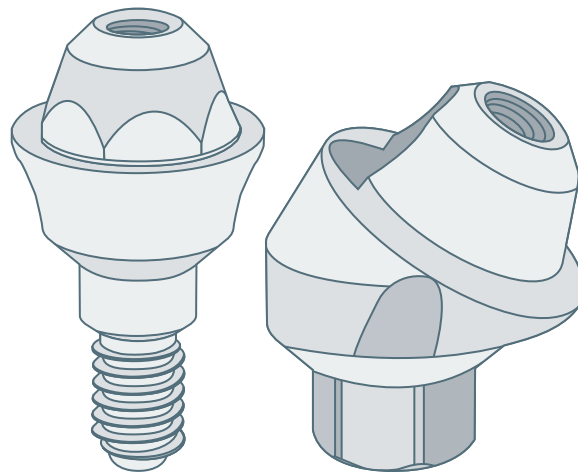
Contra angle key for straight MUA D-type

TORQUE
30 Ncm



ITEM	H 22 mm	H 30 mm
REF	UMDC-2722	UMDC-2730

• Multi-unit • D-Type • Nobel • Neodent



**FREE DIGITAL
LIBRARIES
DOWNLOAD HERE**

CONICAL PLATFORM

HEIGHT	DIAMETER			
	MINI	REGULAR		
	3.3 mm	3.75 mm	4.2 mm	5.0 mm
8 mm	UCI-3308	UCI-3708	UCI-4208	UCI-5008
10 mm	UCI-3310	UCI-3710	UCI-4210	UCI-5010
11.5 mm	UCI-3311	UCI-3711	UCI-4211	UCI-5011
13 mm	UCI-3313	UCI-3713	UCI-4213	UCI-5013
16 mm	UCI-3316	UCI-3716	UCI-4216	UCI-5016

CONICAL Regular Platform

Straight abutment Ø4.5 H5.5

- TORQUE 30 Ncm
- SUPPLIED WITH UOSR-0001

CONICAL Regular Platform

ITEM	GH 1 mm	GH 2 mm	GH 3 mm	GH 4 mm	GH 5 mm
REF	SSR-UVR45551	SSR-UVR45552	SSR-UVR45553	SSR-UVR45554	SSR-UVR45555

Straight abutment Ø4.5 H7

- TORQUE 30 Ncm
- SUPPLIED WITH UOSR-0001

CONICAL Regular Platform

ITEM	GH 1 mm	GH 2 mm	GH 3 mm	GH 4 mm	GH 5 mm
REF	SSR-UVR45701	SSR-UVR45702	SSR-UVR45703	SSR-UVR45704	SSR-UVR45705

Straight abutment Ø5 H5.5

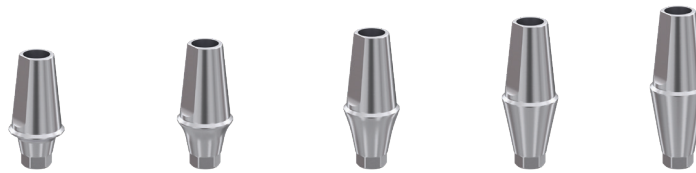
- TORQUE 30 Ncm
- SUPPLIED WITH UOSR-0001

CONICAL Regular Platform

ITEM	GH 1 mm	GH 2 mm	GH 3 mm	GH 4 mm	GH 5 mm
REF	SSR-UVR50551	SSR-UVR50552	SSR-UVR50553	SSR-UVR50554	SSR-UVR50555

Straight abutment Ø5 H7zz

- TORQUE 30 Ncm
- SUPPLIED WITH UOSR-0001

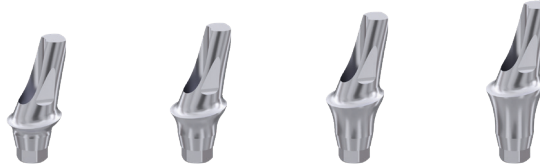


CONICAL
Regular Platform

ITEM	GH 1 mm	GH 2 mm	GH 3 mm	GH 4 mm	GH 5 mm
REF	SSR-UVR50701	SSR-UVR50702	SSR-UVR50703	SSR-UVR50704	SSR-UVR50705

15° abutment

- TORQUE 30 Ncm
- SUPPLIED WITH UOSR-0001



CONICAL
Regular Platform

ITEM	GH 1 mm	GH 2 mm	GH 3 mm	GH 4 mm
REF	AAR-UVR1501	AAR-UVR1502	AAR-OSR1503	AAR-UVR1504

25° abutment

- TORQUE 30 Ncm
- SUPPLIED WITH UOSR-0001



CONICAL
Regular Platform

ITEM	GH 1 mm	GH 2 mm	GH 3 mm	GH 4 mm
REF	AAR-UVR2501	AAR-UVR2502	AAR-UVR2503	AAR-UVR2504

Healing cap Ø4.5

- TORQUE 15 Ncm



CONICAL
Regular Platform

ITEM	H 2 mm	H 3 mm	H 4 mm	H 5 mm	H 6 mm	H 7 mm
REF	HCR-UVR4502	HCR-UVR4503	HCR-UVR4504	HCR-UVR4505	HCR-UVR4506	HCR-UVR4507

Healing cap Ø6

- TORQUE 15 Ncm



CONICAL
Regular Platform

ITEM	H 2 mm	H 3 mm	H 4 mm	H 5 mm	H 6 mm	H 7 mm
REF	HCR-UVR6002	HCR-UVR6003	HCR-UVR6004	HCR-UVR6005	HCR-UVR6006	HCR-UVR6007

Screw for abutment

- TORQUE 30 Ncm
- SCREW DRIVER TYPE Hex, 1.22 mm

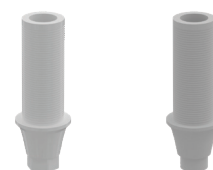


CONICAL
Regular Platform

REF	UUVR-0001
-----	-----------

Castable straight abutment

- TORQUE 30 Ncm
- SUPPLIED WITH UOSR-0001



CONICAL
Regular Platform

ITEM	Hex	Round
REF	CAB-UVR0001	CAB-UVR1001

Ball attachment abutment

SCREW DRIVER TYPE
Hex, 1.22 mm

CONICAL
Regular Platform



ITEM	GH 0.5 mm	GH 1 mm	GH 2 mm	GH 3 mm	GH 4 mm	GH 5 mm	GH 6 mm
REF	BAR-UVR0050	BAR-UVR0001	BAR-UVR0002	BAR-UVR0003	BAR-UVR0004	BAR-UVR0005	BAR-UVR0006

Housing cap for ball attachment



REF | UBMR-0001

Silicone cap for ball attachment standard



REF | UBSR-0001

Silicone cap for ball attachment extrasoft



REF | UBSR-0002

Silicone cap for ball attachment lab



REF | UBSR-0003

DLOC attachment abutment

SCREW DRIVER TYPE
Hex, 1.22 mm

CONICAL
Regular Platform



ITEM	GH 1 mm	GH 2 mm	GH 3 mm	GH 4 mm	GH 5 mm	GH 6 mm
REF	LAR-UVR0001U	LAR-UVR0002U	LAR-UVR0003U	LAR-UVR0004U	LAR-UVR0005U	LAR-UVR0006U

15° DLOC attachment abutment

TORQUE
30 Ncm

SUPPLIED WITH
USWR-3783

CONICAL
Regular Platform



ITEM	GH 1 mm	GH 2 mm	GH 3 mm
REF	LAR-USR1501U	LAR-USR1502U	LAR-USR1503U

30° DLOC attachment abutment

TORQUE
30 Ncm

SUPPLIED WITH
USWR-3783

CONICAL
Regular Platform



ITEM	GH 1 mm	GH 2 mm	GH 3 mm
REF	LAR-USR3001U	LAR-USR3002U	LAR-USR3003U

Housing cap for DLOC



REF | ULMR-0001

Silicone cap for DLOC lab



REF | ULCR-0004

Silicone cap for DLOC standard



REF | ULCR-0002

Silicone cap for DLOC soft



REF | ULCR-0001

Silicone cap for DLOC strong



REF | ULCR-0003

Implant analog



REF | IAR-UVR0007

Transfer tray

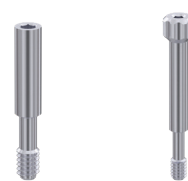
SUPPLIED WITH
TSR-QSR0010



ITEM	closed tray	open tray
REF	TCR-UVR0001	TOR-UVR0001

Screw for transfer

TORQUE
30 Ncm



ITEM	closed tray	open tray
REF	TSR-UVR0010	TSR-UVR0017

UCLA Titanium base

SUPPLIED WITH
UOSR-0001

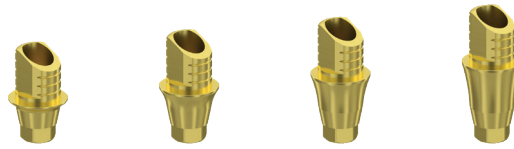
TORQUE
15 Ncm



REF | CLA-UVR4610

Ti-Base UNO hex H4

- TORQUE 30 Ncm
- SUPPLIED WITH UOSR-0002

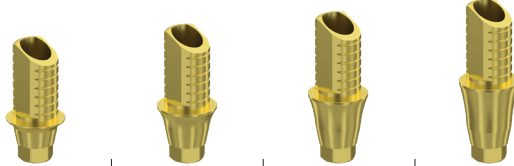


CONICAL
Regular Platform

ITEM	GH 1 mm	GH 2 mm	GH 3 mm	GH 4 mm
REF	TBU-UVR0401U	TBU-UVR0402U	TBU-UVR0403U	TBU-UVR0404U

Ti-Base UNO hex H6

- TORQUE 30 Ncm
- SUPPLIED WITH UOSR-0002

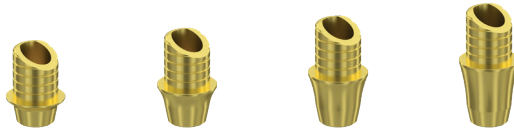


CONICAL
Regular Platform

ITEM	GH 1 mm	GH 2 mm	GH 3 mm	GH 4 mm
REF	TBU-UVR0601U	TBU-UVR0402U	TBU-UVR0603U	TBU-UVR0604U

Ti-Base UNO round H4

- TORQUE 30 Ncm
- SUPPLIED WITH UOSR-0002

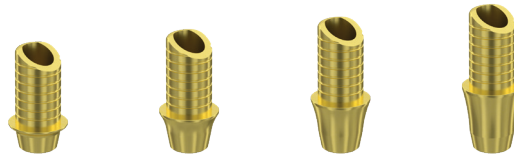


CONICAL
Regular Platform

ITEM	GH 1 mm	GH 2 mm	GH 3 mm	GH 4 mm
REF	TBU-UVR1401U	TBU-UVR1402U	TBU-UVR1403U	TBU-UVR1404U

Ti-Base UNO round H6

- TORQUE 30 Ncm
- SUPPLIED WITH UOSR-0002



CONICAL
Regular Platform

ITEM	GH 1 mm	GH 2 mm	GH 3 mm	GH 4 mm
REF	TBU-UVR1601U	TBU-UVR1402U	TBU-UVR1603U	TBU-UVR1604U

Digital implant analog

- SUPPLIED WITH UIAR-S001

CONICAL
Regular Platform



REF | IAD-UVR0001

Scan body implant level

- TORQUE 15 Ncm
- SUPPLIED WITH UOSR-0001

CONICAL
Regular Platform



REF | SBI-UVR0009

Screw for angled MUA D-type

- SCREW DRIVER TYPE Hex, 1.22 mm
- TORQUE 30 Ncm

CONICAL
Regular Platform



REF | MSD-UVR0007

Straight multi unit abutment D-type

- TORQUE 30 Ncm
- SCREW DRIVER TYPE Hex, 1.27 mm

CONICAL
Regular Platform



ITEM	GH 1 mm	GH 2 mm	GH 3 mm	GH 4 mm
REF	SMD-UVR3701	SMD-UVR3702	SMD-UVR3703	SMD-UVR3704

17° multi unit abutment

D-type

TORQUE
30 Ncm



CONICAL
Regular Platform

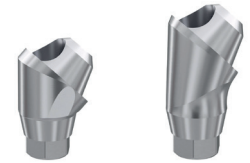
ITEM	GH 1 mm	GH 2 mm	GH 3 mm	GH 4 mm
REF	AMD-UVR1701	AMD-UVR1702	AMD-UVR1703	AMD-UVR1704

45° multi unit abutment

D-type

TORQUE
30 Ncm

CONICAL
Regular Platform



ITEM	GH 1 mm	GH 2.5 mm
REF	AMD-OSR4501	AMD-OSR4525

30° multi unit abutment

D-type

TORQUE
30 Ncm



CONICAL
Regular Platform

ITEM	GH 1 mm	GH 2 mm	GH 3 mm	GH 4 mm
REF	AMD-UVR3001	AMD-UVR3002	AMD-UVR3003	AMD-UVR3004

Temporary sleeve for MUA D-type

TORQUE
15 Ncm
 SUPPLIED WITH
UMSD-0002U



REF | USTD-000

Castable sleeve for MUA D-type

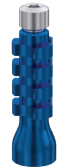
SUPPLIED WITH
UMSD-0002U



REF | USCD-0001

Transfer for MUA D-type H15

SUPPLIED WITH
UMSD-0017



REF | UMTD-0002U

Transfer for MUA D-type H12

SUPPLIED WITH
UMSD-0017



REF | UMTD-0001U

Transfer for MUA D-type

SUPPLIED WITH
UMSD-2012



REF | UMTD-0002

Screw for MUA transfer D-type

REF | UMSD-0017



Screw TITLE

TORQUE
30 Ncm



REF | UMSD-2012

Analog MUA D-type

REF | UMAD-0001U



Healing cap for MUA D-type

TORQUE
15 Ncm



REF | UMHD-0004

Screw for MUA sleeve D-type U

TORQUE
30 Ncm
 SCREW DRIVER TYPE
Hex, 1.27 mm



REF | UMSD-0002U

Screw for MUA sleeve D-type Torx6

TORQUE
30 Ncm
 SCREW DRIVER TYPE
Hex, 1.27 mm



REF | UMSD-T603U

Digital analog MUA D-type

SUPPLIED WITH
UIAR-S001



REF | UMAD-D001U

Scan body MUA level D-type

TORQUE
15 Ncm
 SUPPLIED WITH
USBD-S001



REF | USBD-0001

Scan body MUA level D-type H12

TORQUE
15 Ncm
 SUPPLIED WITH
USBD-S012



REF | USBD-0012

Sleeve for MUA D-type H4 C

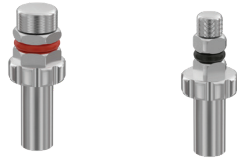
TORQUE
30 Ncm
 SUPPLIED WITH
UMSD-0002U



REF | USTD-0003C

Ratchet key for straight MUA D-type

TORQUE
30 Ncm



ITEM	H 6.3 mm	H 4.0 mm
REF	UMDR-2716	UMDR-4010

Contra angle key for straight MUA D-type

TORQUE
30 Ncm



ITEM	H 22 mm	H 30 mm
REF	UMDC-2722	UMDC-2730

CONICAL Mini Platform

Straight abutment Ø4.5 H5.5

TORQUE
30 Ncm
 SUPPLIED WITH
UOSM-0001

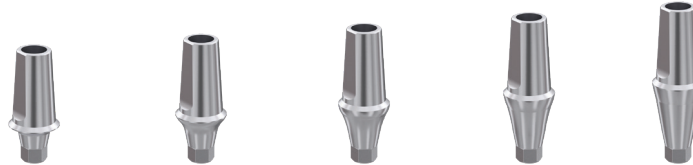


CONICAL
Mini Platform

ITEM	GH 1 mm	GH 2 mm	GH 3 mm	GH 4 mm	GH 5 mm
REF	SSR-UVM45551	SSR-UVM45552	SSR-UVM45553	SSR-UVM45554	SSR-UVM45555

Straight abutment Ø4.5 H7

TORQUE
30 Ncm
 SUPPLIED WITH
UOSM-0001



CONICAL
Mini Platform

ITEM	GH 1 mm	GH 2 mm	GH 3 mm	GH 4 mm	GH 5 mm
REF	SSR-UVM45701	SSR-UVM45702	SSR-UVM45703	SSR-UVM45704	SSR-UVM45705

15° abutment

TORQUE
30 Ncm
 SUPPLIED WITH
UOSM-0001



CONICAL
Mini Platform

ITEM	GH 1 mm	GH 2 mm	GH 3 mm
REF	AAR-UVM1501	AAR-UVM1502	AAR-UVM1503

25° abutment

TORQUE
30 Ncm
 SUPPLIED WITH
UOSM-0001

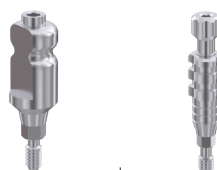


CONICAL
Mini Platform

ITEM	GH 1 mm	GH 2 mm	GH 3 mm
REF	AAR-UVM2501	AAR-UVM2502	AAR-UVM2503

Transfer tray

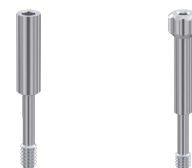
TORQUE
30 Ncm



ITEM	closed tray	open tray
REF	TCR-UVM0001	TOR-UVM0001
	SUPPLIED WITH TSR-OSM0010	SUPPLIED WITH TSR-OSM0017

Screw for transfer

TORQUE
30 Ncm



ITEM	closed tray	open tray
REF	TSR-UVM0010	TSR-UVM0017

Screw for abutment

SCREW DRIVER TYPE
Hex, 1.22 mm
 TORQUE
30 Ncm



REF	UUVV-0001
-----	-----------

Healing cap Ø4.5

TORQUE
15 Ncm

CONICAL
Mini Platform



ITEM	H 2 mm	H 3 mm	H 4 mm	H 5 mm	H 6 mm	H 7 mm
REF	HCR-UVM4502	HCR-UVM4503	HCR-UVM4504	HCR-UVM4505	HCR-UVM4506	HCR-UVM4507

Ball attachment abutment

SCREW DRIVER TYPE
Hex, 1.22 mm

CONICAL
Mini Platform



ITEM	GH 0.5 mm	GH 1 mm	GH 2 mm	GH 3 mm	GH 4 mm	GH 5 mm	GH 6 mm
REF	BAR-UVM0050	BAR-UVM0001	BAR-UVM0002	BAR-UVM0003	BAR-UVM0004	BAR-UVM0005	BAR-UVM0006

DLOC attachment abutment

SCREW DRIVER TYPE
Hex, 1.22 mm

CONICAL
Mini Platform

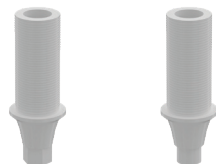


ITEM	GH 1 mm	GH 2 mm	GH 3 mm	GH 4 mm	GH 5 mm
REF	LAR-UVM0001U	LAR-UVM0002U	LAR-UVM0003U	LAR-UVM0004U	LAR-UVM0005U

Castable straight abutment

TORQUE
15 Ncm

SUPPLIED WITH
USWR-3783



CONICAL
Mini Platform

ITEM	Hex	Round
REF	CAB-UVM0001	CAB-UVM1001

UCLA Titanium base

SUPPLIED WITH
UOSR-0001

TORQUE
15 Ncm



REF | CLA-UVM4610

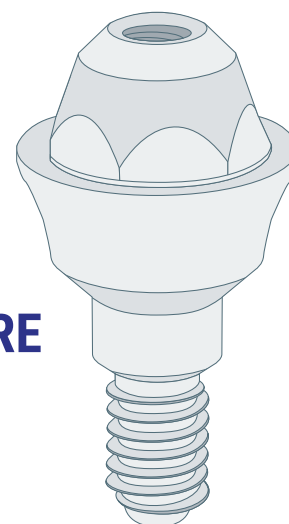
Implant analog



REF | IAR-UVM0008



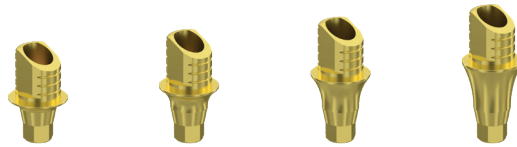
**FREE DIGITAL
LIBRARIES
DOWNLOAD HERE**



Ti-Base UNO hex - H4 mm

- TORQUE 30 Ncm
- SUPPLIED WITH UOSM-0001

CONICAL Mini Platform

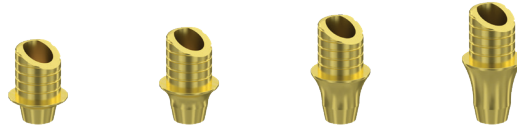


ITEM	GH 1 mm	GH 2 mm	GH 3 mm	GH 4 mm
REF	TBU-UVM0401U	TBU-UVM0402U	TBU-UVM0403U	TBU-UVM0404U

Ti-Base UNO hex - H6 mm

- TORQUE 30 Ncm
- SUPPLIED WITH UOSM-0001

CONICAL Mini Platform

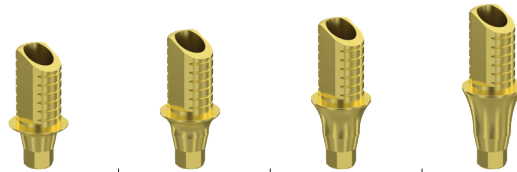


ITEM	GH 1 mm	GH 2 mm	GH 3 mm	GH 4 mm
REF	TBU-UVM1401U	TBU-UVM1402U	TBU-UVM1403U	TBU-UVM1404U

Ti-Base UNO round - H4 mm

- TORQUE 30 Ncm
- SUPPLIED WITH UOSM-0001

CONICAL Mini Platform

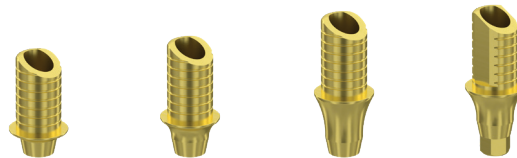


ITEM	GH 1 mm	GH 2 mm	GH 3 mm	GH 4 mm
REF	TBU-UVM0601U	TBU-UVM0602U	TBU-UVM0603U	TBU-UVM0604U

Ti-Base UNO round - H6 mm

- TORQUE 30 Ncm
- SUPPLIED WITH UOSM-0001

CONICAL Mini Platform



ITEM	GH 1 mm	GH 2 mm	GH 3 mm	GH 4 mm
REF	TBU-UVM1601U	TBU-UVM1602U	TBU-UVM1603U	TBU-UVM1604U

Digital implant analog

- SUPPLIED WITH UIAR-S001

CONICAL Mini Platform



REF | IAD-UVM0001

Scan body implant level

- TORQUE 15 Ncm
- SUPPLIED WITH UOSM-0001

CONICAL Mini Platform



REF | SBI-UVM0009

Screw for angled MUA D-type

- TORQUE 30 Ncm
- SCREW DRIVER TYPE Hex, 1.22 mm

CONICAL Mini Platform



REF | MSD-UVM0007

Straight multi unit abutment D-type

- TORQUE 30 Ncm
- SCREW DRIVER TYPE Hex, 6.35 mm

CONICAL Mini Platform



ITEM	GH 1 mm	GH 2 mm	GH 3 mm	GH 4 mm
REF	SMD-UVM3701	SMD-UVM3702	SMD-UVM3703	SMD-UVM3704

17° multi unit abutment D-type

- TORQUE 30 Ncm
- SUPPLIED WITH MSD-OSM0007



CONICAL
Mini Platform

ITEM	GH 1 mm	GH 2 mm	GH 3 mm
REF	AMD-UVM1701	AMD-UVM1702	AMD-UVM1703

30° multi unit abutment D-type

- TORQUE 30 Ncm
- SUPPLIED WITH MSD-OSM0007



CONICAL
Mini Platform

ITEM	GH 1 mm	GH 2 mm	GH 3 mm
REF	AMD-UVM3001	AMD-UVM3002	AMD-UVM3003

Temporary sleeve for MUA D-type

- TORQUE 15 Ncm
- SUPPLIED WITH UMSD-0002U



REF | USTD-000

Castable sleeve for MUA D-type

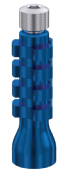
- SUPPLIED WITH UMSD-0002U



REF | USCD-0001

Transfer for MUA D-type H15

- SUPPLIED WITH UMSD-0017



REF | UMTD-0002U

Transfer for MUA D-type H12

- SUPPLIED WITH UMSD-0017



REF | UMTD-0001U

Transfer for MUA D-type

- SUPPLIED WITH UMSD-2012



REF | UMTD-0002

Screw for MUA transfer D-type



REF | UMSD-0017

Screw TITLE

- TORQUE 30 Ncm



REF | UMSD-2012

Analog MUA D-type



REF | UMAD-0001U

Healing cap for MUA D-type

- TORQUE 15 Ncm



REF | UMHD-0004

Screw for MUA sleeve D-type U

- TORQUE 30 Ncm
- SCREW DRIVER TYPE Hex, 1.27 mm



REF | UMSD-0002U

Screw for MUA sleeve D-type Torx6

- TORQUE 30 Ncm
- SCREW DRIVER TYPE Hex, 1.27 mm



REF | UMSD-T603U

Digital analog MUA D-type

- SUPPLIED WITH UIAR-S001



REF | UMAD-D001U

Scan body MUA level D-type

- TORQUE 15 Ncm
- SUPPLIED WITH USBD-S001



REF | USBD-0001

Scan body MUA level D-type H12

- TORQUE 15 Ncm
- SUPPLIED WITH USBD-S012



REF | USBD-0012

Sleeve for MUA D-type H4 C

- TORQUE 30 Ncm
- SUPPLIED WITH UMSD-0002U



REF | USTD-0003C

INSTRUMENTS INTERNAL HEX

Contra-angle driver for implants and cover screw

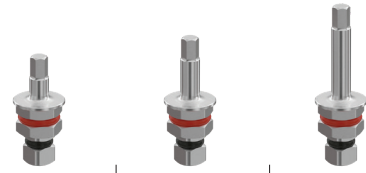
SCREW DRIVER TYPE
Hex, 1.27/2.4 mm



ITEM	H 20 mm	H 27 mm
REF	USIC-1520	USIC-1527

Ratchet screw driver for implants 2.4 mm

SCREW DRIVER TYPE
Hex, 2.4 mm



ITEM	H 7 mm	H 10 mm	H 15 mm
REF	UIDR-2407	UIDR-2410	UIDR-2415

Manual screw driver for abutments

SCREW DRIVER TYPE
Hex, 1.27 mm



ITEM	H 8 mm	H 15 mm	H 30 mm
REF	USDM-1708	USDM-1715	USDM-1730

Ratchet screw driver for abutments

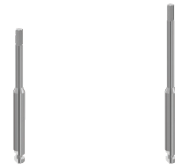
SCREW DRIVER TYPE
Hex, 1.27 mm



ITEM	H 7 mm	H 10 mm	H 15 mm
REF	USDR-1707	USDR-1710	USDR-1715

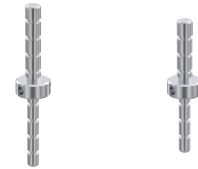
Contra-angle driver for abutments

SCREW DRIVER TYPE
Hex, 1.27 mm



ITEM	H 12 mm	H 17 mm
REF	USDC-1512	USDC-1517

Parallel pin double sided long / short symmetry



ITEM	Long	Short
REF	UPPD-2210	UPPD-1808

Manual implant driver 6.35 mm



REF | UIDM-0635

Manual implant driver hex

SCREW DRIVER TYPE
Hex, 2.4 mm



REF | UIDD-0024

Depth probe



REF | UDP-0001

Ratchet wrench



REF | URW-0001



INSTRUMENTS CONICAL 11°

Contra-angle driver for implants Hex 2.1 mm

SCREW DRIVER TYPE
Hex, 2.1 mm



ITEM	H 20 mm	H 27 mm
REF	USIC-2120	USIC-2127

Ratchet screw driver for implants 2.1 mm

SCREW DRIVER TYPE
Hex, 2.1 mm



ITEM	H 7 mm	H 10 mm	H 15 mm
REF	UIDR-2107	UIDR-2110	UIDR-2115

Contra-angle driver for implants Hex 2.5 mm

SCREW DRIVER TYPE
Hex, 2.5 mm



ITEM	H 20 mm	H 27 mm
REF	USIC-2520	USIC-2527

Ratchet screw driver for implants 2.5 mm

SCREW DRIVER TYPE
Hex, 2.5 mm



ITEM	H 7 mm	H 10 mm	H 15 mm
REF	UIDR-2507	UIDR-2510	UIDR-2515

Ratchet screw driver for abutments Head 4 mm

SCREW DRIVER TYPE
Hex, 1.22 mm



ITEM	H 7 mm	H 10 mm	H 15 mm
REF	USDR-4207	USDR-4210	USDR-4215

Manual screw driver for abutments

SCREW DRIVER TYPE
Hex, 1.22 mm



ITEM	H 7 mm	H 10 mm	H 15 mm
REF	USDM-1208	USDM-1215	USDM-1230

DRILL

Drills with external irrigation



REF	DIA
UDE200L16	Ø 2.0
UDE250L16	Ø 2.5
UDE280L16	Ø 2.8
UDE320L16	Ø 3.2
UDE365L16	Ø 3.65
UDE420L16	Ø 4.2

Conical Drills with external



REF	DIA
UDCE1622L16	Ø 2.2
UDCE1825L16	Ø 2.5
UDCE2028L16	Ø 2.8
UDCE2332L16	Ø 3.2
UDCE2537L16	Ø 3.7
UDCE2740L16	Ø 4.0

Twist Drills Coated



REF	DIA
UDTC200L16	Ø 2.0
UDTC250L16	Ø 2.5
UDTC280L16	Ø 2.8
UDTC320L16	Ø 3.2
UDTC365L16	Ø 3.65
UDTC420L16	Ø 4.2

Step Drills Coated



REF	DIA	
UDST200L16C	Ø 2.0	Ø 2.0
UDST2024L16C	Ø 2.0	Ø 2.4
UDST2328L16C	Ø 2.3	Ø 2.8
UDST2832L16C	Ø 2.8	Ø 3.2
UDST3237L16C	Ø 3.2	Ø 3.7

DRILL STOPPERS

Drill stoppers D2.0



UDS200L16 UDS200L13 UDS200L11 UDS200L10 UDS200L8 UDS200L6

Drill stoppers D2.8



UDS280L16 UDS280L13 UDS280L11 UDS280L10 UDS280L8 UDS280L6

Drill stoppers D2.5



UDS250L16 UDS250L13 UDS250L11 UDS250L10 UDS250L8 UDS250L6

Drill stoppers D3.2



UDS320L16 UDS320L13 UDS320L11 UDS320L10 UDS320L8 UDS320L6

Drill stoppers D3.65



UDS365L16 UDS365L13 UDS365L11 UDS365L10 UDS365L8 UDS365L6

Drill stoppers D4.2



UDS420L16 UDS420L13 UDS420L11 UDS420L10 UDS420L8 UDS420L6

DRILL

Lance Drill



REF
UDL120L16
UDL150L16
UDL200L16

Lance Drill



REF
UDL120L13
UDL150L13
UDL200L13

Marking Drill



REF
UDME190
UDMI190

Round burr



REF
UBR16
UBR12
UBR20
UBR23
UBR30
UBR40

Trephine burr



REF
UBT3040L16
UBT4050L16
UBT5060L16

Drill Extender



REF
UDE16
UDE16

Tissue Punch




REF
UPT30
UPT40
UPT45
UPT50



Smart Implants

13 Aluf Yacov Perry Str.
Office 304,
Rehovot 7639302
Israel

Tel + 972(0)8-6607566
Info@smart-implant.com
www.Implant-smart.com

 +972(0)54-3575050